

King Edmund Community School Bullying Policy

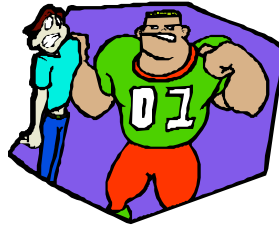
Our definition of bullying:

Bullying is when a person or group of people deliberately and persistently target someone else to hurt.

The actions might be verbal, physical or psychological.

The 'target' is discriminated against for being different ~ in race, gender, beliefs, sexuality, ability or disability, physical appearance or the 'target' might just be chosen at random or out of a personal dislike or simply jealousy.

We, the students of King Edmund, believe that **NONE** of these are justifiable.



Bullying is intimidation that might take the form of:

- ⊗ Physical abuse eg. kicking, fighting, pushing, ganging up
- ⊗ Verbal abuse eg name calling, foul language, spreading rumours, threats
- ⊗ Psychological abuse eg. ignoring someone, leaving individuals out, hurting someone's feelings, making the 'target' feel singled out and uncomfortable, destroying the 'target's confidence or self esteem
- ⊗ Text Messaging eg. sending abusive or threatening messages
- ⊗ Malicious E:mails sent directly to the target or to others
- ⊗ Property theft or deliberate vandalism of a 'target's possessions

We will NOT tolerate this behaviour in our school community at King Edmund. This behaviour does not allow students to feel safe, thrive or succeed in school.



The principle aims of our policy are to:

- Uphold every student's right to feel secure and confident in school
- Uphold every student's right to be safe from any unkindness, threats or physical violence whilst in school
- Allow students to work, untroubled, to the best of their ability in school
- Allow a positive and friendly atmosphere in school
- Ensure a 'look out for each other' culture
- Encourage an understanding of people who are different
- Encourage tolerance and acceptance of all other students
- Ensure all reports of bullying are listened to and investigated
- Offer support strategies to 'targets' of bullying
- Empower students via assertiveness training in PSHCE
- Offer bullies the opportunity and counselling to understand and reform
- Ensure persistent, unremorseful bullies are punished

Establish King Edmund's reputation as having 'zero tolerance' of bullies.



Procedures are now set down for reporting, recording and dealing with incidents of bullying:

- Students or their parents should feel able to report a bullying incident to *any* member of staff.
- Staff should then report all incidents to the relevant Learning Co-ordinator.
- Learning Co-od. to follow procedural guidelines in the policy document.
- Parents will be kept informed of actions, intervention strategies and sanctions.

WRONG WAY

Sanctions:

- ⇒ **Racist bullying** immediately reported to LEA
 - LEA policy / sanctions apply
- ⇒ **First offence** of bullying:
 - fixed term of internal suspension
 - behaviour contract monitored by Learning Co-ord.
 - parents informed
- ⇒ **Second offence** of bullying:
 - fixed term of exclusion
 - behaviour contract monitored by SLT
 - 'supervision order' on breaktimes & lunchtimes
 - compulsory anti-bullying course after school in P.I.C.
 - greater parental involvement in behaviour management meetings
- ⇒ **Persistent Offenders:**
 - police involvement
 - longer fixed term or permanent exclusion from KECS

CAUTION
WATCH YOUR STEP



Intervention Strategies:

During the students' work on the school's Anti-Bullying policy several innovative ideas for *intervention strategies* were suggested to reduce the incidents of bullying. ***We are working on them!!***



CHILDLINE: Freephone 0800 1111
www.childline.org.uk

ANTI-BULLYING CAMPAIGN: 0207 378 1446

KIDSCAPE: 0207 730 3300
www.kidscape.org.uk

PARENTLINE PLUS: 0808 800 2222
www.dfes.go.uk/bullying.

www.dontsufferinsilence.com

www.bullywatch.org

www.lifebytes.co.uk

www.nspcc.org.uk

www.bullyingonline.co.uk/school

www.savethechildren.org.co.uk

See the school's CONNEXIONS advisor

This information has been drawn up by the students and teachers of King Edmund Community School.

*It is an 'easy access' guide to the **Anti - Bullying Policy***

The policy is in line with DfES & OFSTED guidelines and is a part of the ongoing King Edmund ~ "Bullies ~ Can Beat It!" campaign.